

Warranty

- One year limited warranty for hardware defects.
- Warranty does not cover problems caused by misuse or mistreatment of the device.
- Any changes or modifications of this device could void the warranty.

Warning

- Do not expose to moisture and/or high temperature environment.
- Do not disassemble, puncture, drop or submerge in liquids.
- Stop using immediately if bulging or bubbling develops.
- Not for children under 3 years old.

POWER COVER

User Manual



Please visit www.fondi.com.tw for more information and software upgrading requirement.
Copyright © 2014 FondiVersal Technology Co., Ltd.

Specifications

Battery Type: Lithium Polymer Input: DC 5V / 0.5A - 1.5A
Capacity: 1800mAh Output: DC 5V / 0.5A - 1A
Compatibility: iPhone 5 series (iPhone 5/5s Lightning Connector)
Life Cycles: >500 Cycles

Package Contents

1 x Fondi Power Cover
1 x User Manual

Instructions & Applications

Provide protection as well as power.
(Up to 90% of iPhone capacity)

The functions and status of key "+" and "-"

Status of key "+"

| | |
|-------------------------|--------------------------|
| Press "+" for 1 second | Check the capacity |
| Press "+" for 3 seconds | Start or stop charging |
| Press "+" for 5 seconds | Access to upgrading mode |

Status of key "-"

| | |
|----------------|------------------------------------|
| 01% - 33% | Green light flash 3 times |
| 34% - 66% | Green light flash 2 times |
| 67% - 99% | Green light flash 1 time |
| 100% | Green light always on |
| >1% | Red light remain flashing |
| Upgrading mode | Both green and red light always on |

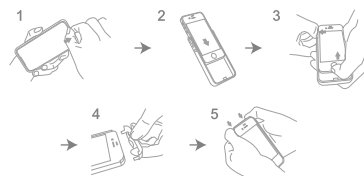
1. When power pad start working or charging, the LED light keeps flashing 30 seconds.
2. When checking the capacity, the LED light will keep flashing 30 seconds in different frequency to show power status.

Instructions for charge control

1. Press "+" button for 3 seconds to charge iPhone.
Press "+" button again to stop charging. Charging automatically stops when iPhone reaches full capacity.
2. Charges automatically every time you charge your iPhone.
(When the battery inside iPhone is full, Fondi power cover automatically redirects the power to its batteries.)

Assembly Instruction

1. Hold the middle part of upper cover, and push outward to take the upper cover out.
2. Slide iPhone into the case. If iPhone get stuck by on/off switch or volume button, please gently push Fondi power cover outward. (See picture 2)
3. Make sure iPhone tightly fit with the lower cover, and push the upper cover back to it's original position.



Disassembly Instruction

1. Pull out upper cover.
2. Gently push and slide the iPhone to open.
3. Pull out the iPhone. And push the upper cover back to it's original position.

