

This user guide is a standard model. It should be adapted according to your hardware and Android version.



MANUEL D'UTILISATION

1- How to start MoFing™ KIDS

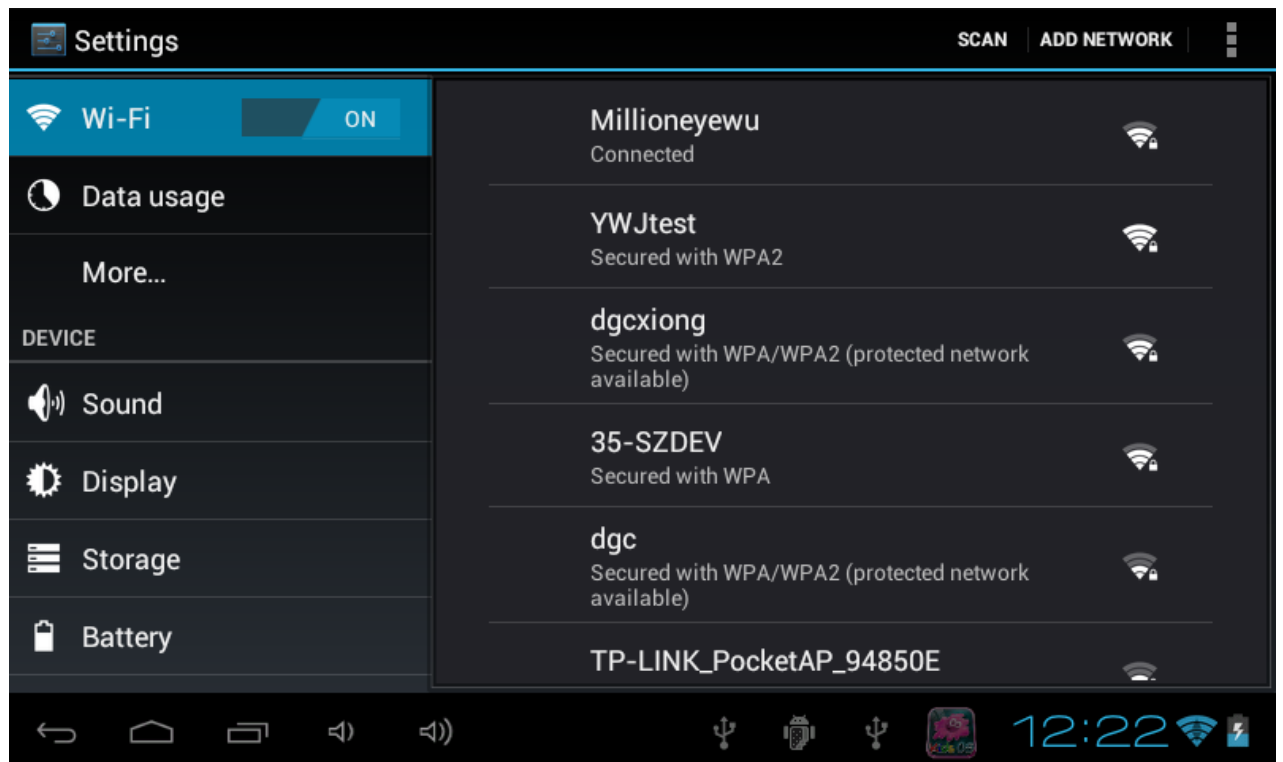
Connect WiFi: click parental control  -> click setting  -> click Wifi



and click right side dark blue space of OFF

then you will see turn on wifi  -> and finally you connect suitable wifi

This user guide is a standard model. It should be adapted according to your hardware and Android version.

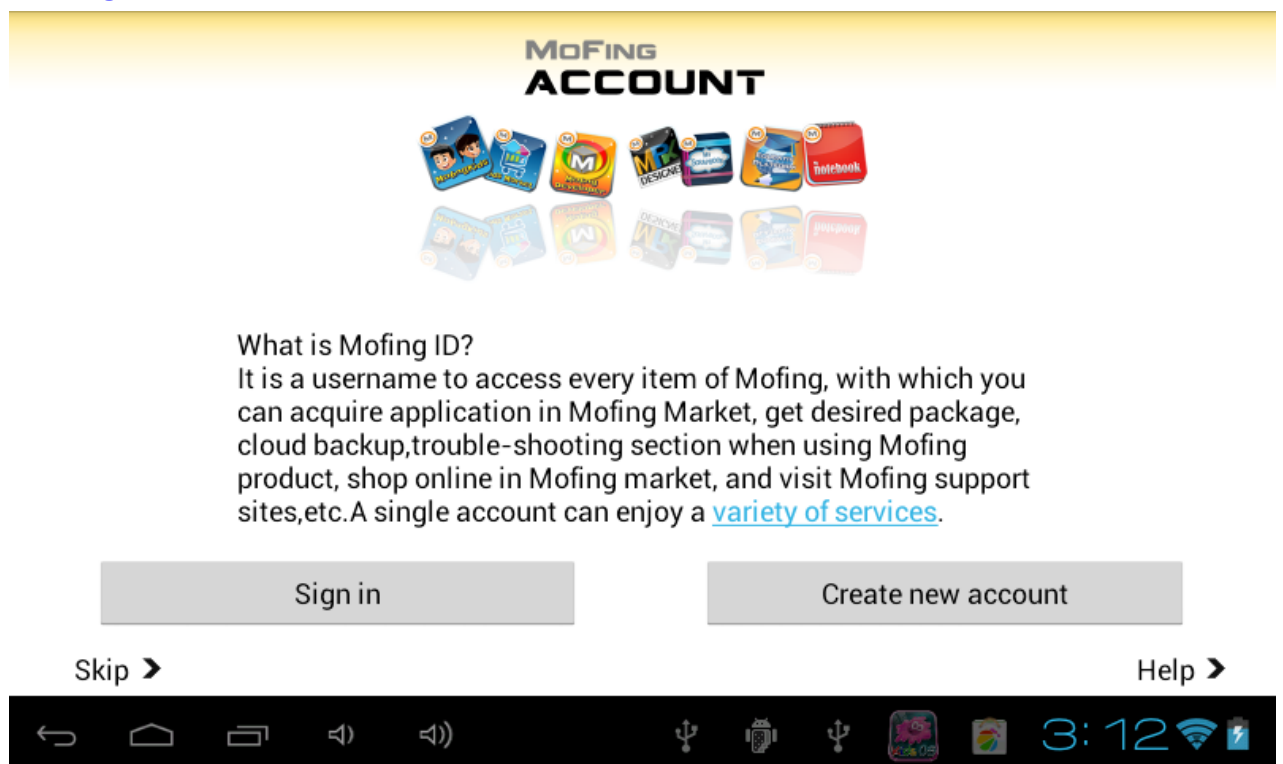


Create Mofing account: insert effective mailbox and password. Please do remember your account and password. If you forget your password, please insert your mailbox in below address to set up new password.

<http://market.mofing.com/users/forgot>

or if have any question, please send mail to

mofingkids@million-e.com.cn



This user guide is a standard model. It should be adapted according to your hardware and Android version.

CAUTION: You should now have a few things written down in a safe place, this could be stored in the contact list of your smartphone

- ✦ MOFING ACCOUNT EMAIL
- ✦ MOFING PASSWORD
- ✦ PARENT CONTROL PASSWORD

This user guide is a standard model. It should be adapted according to your hardware and Android version.

Home page



The Home Page gives you access to 6 mains categories and to 8 other functions:

- 1- Overview of the 6 main functions and 8 other categories:
 - a. primary school: learn with fun (courses sheet, educative games...)
 - b. study abroad : play to fun overseas education contents
 - c. kindergarten: dedicated for 2-5 years kids
 - d. TV mofing: hours and hours of kids videos
 - e. Navigate: Watch widest cartoon. And Parent can add suitable website link for kids in “ Parent setting – online content”, and then kids can browse these filtered website here.
 - f. E-challenge: testing on line, more than 300apps.
1. Present: Mofing release gifts for members, parents buy mofing gifts for kids
2. Online course: consumer will see course near future.
3. Consultation: students can ask question on line for teachers near future.
4. Log in: create account and review Member’s Privileges
5. Parental control: Parents can control the use of the tablet
6. Music: listen and enjoy your own music
7. Photo: find all your pictures
8. Video: watch all your own videos

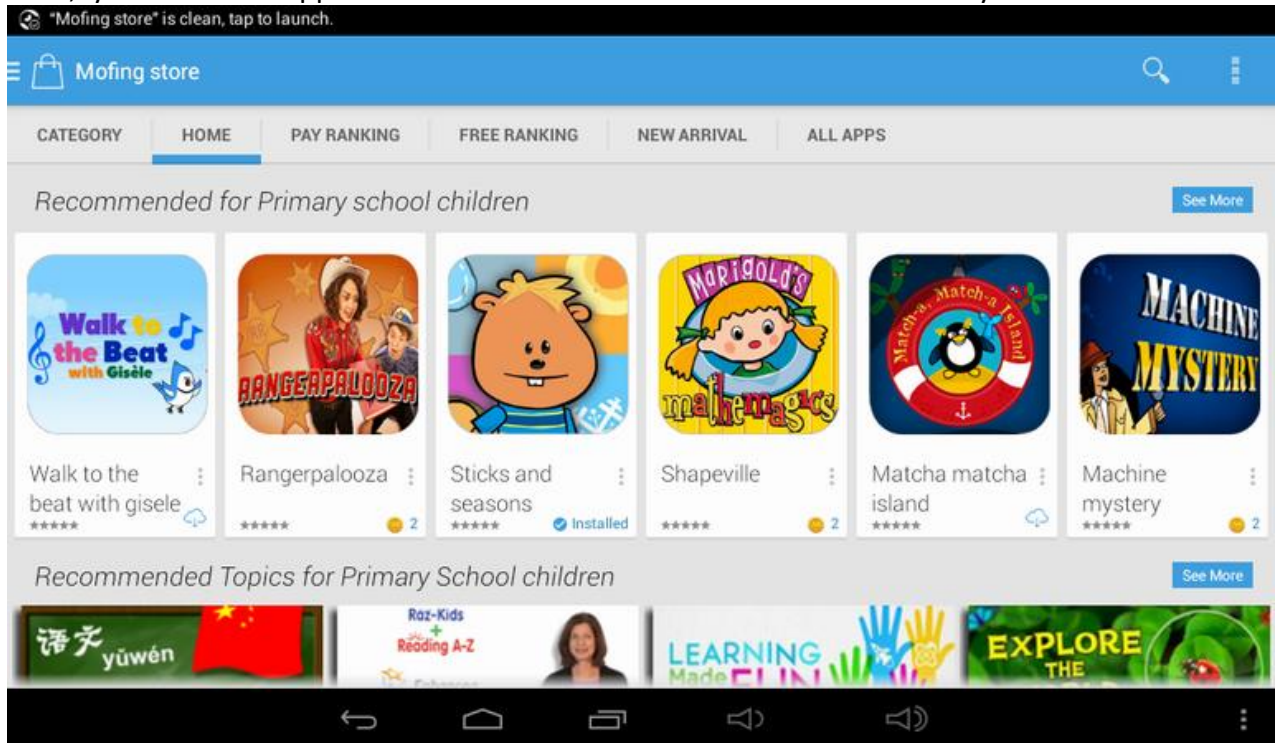
2- Market, add / delete applications

This user guide is a standard model. It should be adapted according to your hardware and Android version.

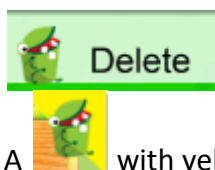
In the 2 main categories—Primary school, Kindergarten, you have to download applications from the corresponding market. To reach the market, press on the market icon to download and install market base on connect wifi.


if you have an account already.

Then, your favourite application in below will be downloaded automatically.



If you want to delete an application, press on the trash which is present in each category:



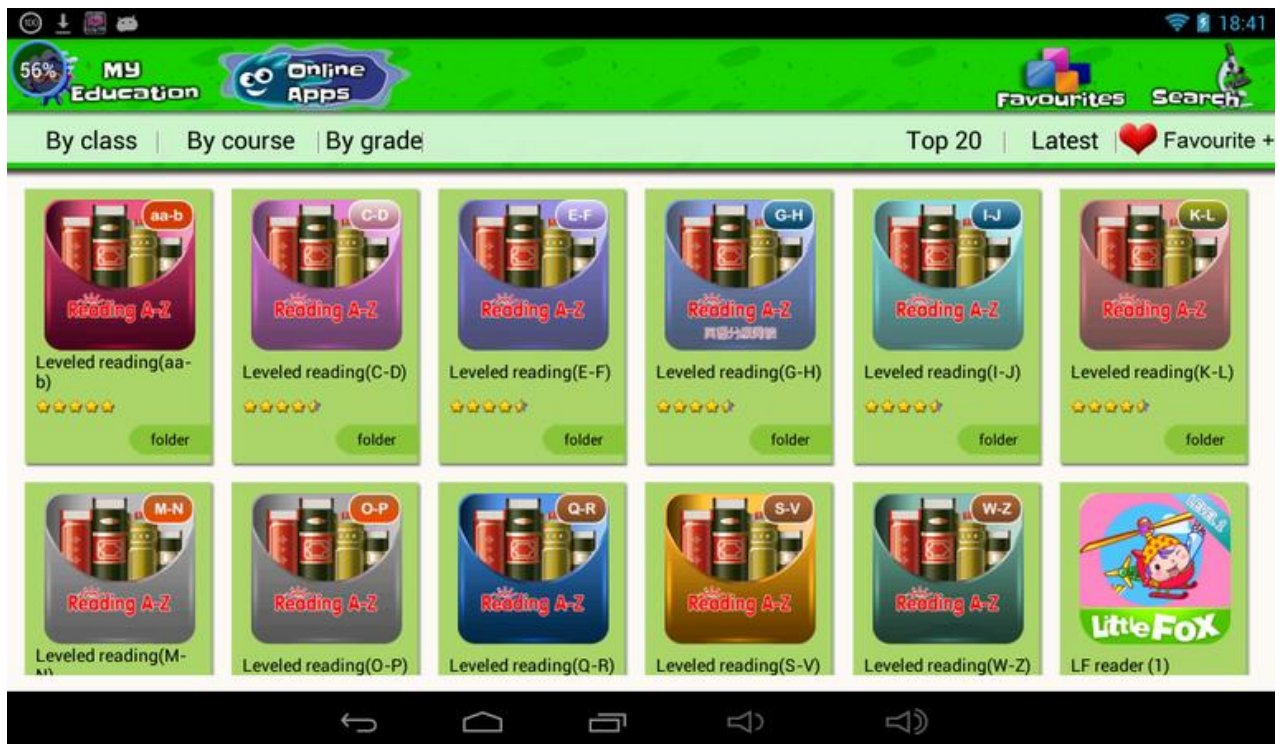
A  with yellow background will appear at the top of each application, select those you want to delete.

The markets of each category are updated automatically. When an update is ready, you just have to confirm this by pressing on the button “update” of the message which will display automatically.

2- Web apps, add to favorites/ delete favorites

a -1 Primary school category->online contents, you will see below a lots web contents in different category(by class, by course, by grade) like science, math, language art etc.

This user guide is a standard model. It should be adapted according to your hardware and Android version.



a-2 E-challenge(testing for primary school programme on line)



This user guide is a standard model. It should be adapted according to your hardware and Android version.

00:14

19. Which numbers are greater than $3\frac{7}{8}$?

A $3\frac{6}{10}$
 B $2\frac{4}{8}$
 C $4\frac{1}{3}$
 D $2\frac{7}{8}$

Score:100 Time:8minute20seco

1 2 3 4 5
 6 7 8 9 10
 11 12 13 14 15
 16 17 18 19 20

Online Testing My Mistakes TOP Ranking Favourites Search



No.	Source	Question	Wrong Count	Operator
1	Fractions, Mixed numbers and Operations (7th)	Compare mixed numbers and improper fractions	20	ReExam
2	Algebra, Ratios, Proportions and Percents (6th)	Identify terms, coefficients and monomials	20	ReExam
3	Addition and Subtraction (4th)	Stimate sums: word problems	20	ReExam
4	Number Theory, Problem Solving and Patterns (6th)	GCF and LCM: word problems	20	ReExam
5	Fractions, Mixed numbers and Operations (7th)	Round mixed numbers	20	ReExam
6	Fractions, Mixed numbers and Operations (7th)	Round mixed numbers	20	ReExam
7	Fractions, Mixed numbers and Operations (7th)	Round mixed numbers	20	ReExam
8	Addition, Subtraction, Multiplication and Division (6th)	Solve for a variable using properties of multiplication	14	ReExam
9	Fractions, Mixed numbers and Operations (7th)	Round mixed numbers	20	ReExam
10	Fractions, Mixed numbers and Operations (7th)	Round mixed numbers	20	ReExam



1/2

a-3 kindergarten category->online apps, you will see different category by subject, by class .

This user guide is a standard model. It should be adapted according to your hardware and Android version.



b. If you want to add to favorites, press on the  Favourite + to add. A  will appear at the top of each application, select those you want to add.

c. If you want to delete an application, press on the  Delete to delete. A little  with yellow background will appear at the top of each application, select those you want to delete.

3-The 8 other basics functions

a-Video

To open the video gallery, press the corresponding cloud button on the top of the home page.

1-How to view all the videos in my gallery?

When in you are the video gallery, simply swipe the screen with yourfinger from right to left to go forward in the list, or from leftto right to go backwards in the list. You can easily navigatethrough all the different pages of videos that way.

This user guide is a standard model. It should be adapted according to your hardware and Android version.



2-How to watch a video?

Press on the video you want to watch, it will launch the videoPlayer. Then you can use the controls of the player.



- a- Press on this button to watch your video in full screen or not
- b- Press on the small round if you want to go forwards in the movie.
- c- Play / Pause: When a video is playing, press to pause it. Press again to resume.
- d- Volume button : Press it to get a lower sound.
- e- Volume button: Press it to get a louder sound.
- f- Press this button to go backwards.

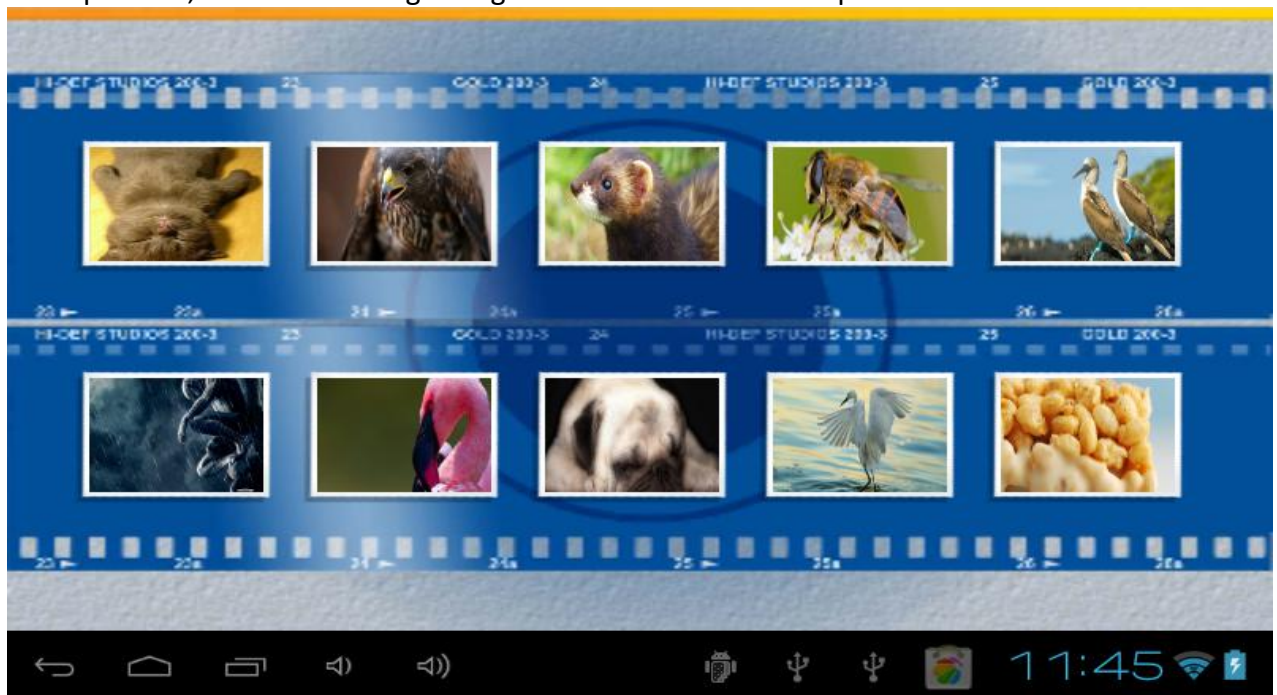
This user guide is a standard model. It should be adapted according to your hardware and Android version.

How to upload or delete a video in your software kids ? Refer to page 16 5) How to transfer documents via USB ?

b-Photos

To open the photo section, press the corresponding icon on the top of the home page.

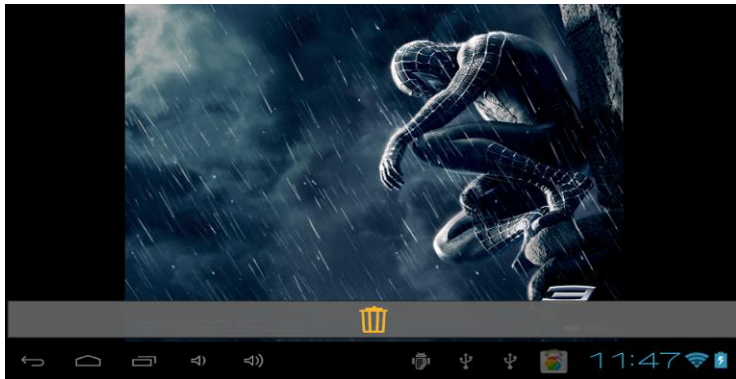
To see your pictures, just move your finger on the screen from right to left to go forward in the list of pictures, or from left to right to go backwards in the list of pictures.



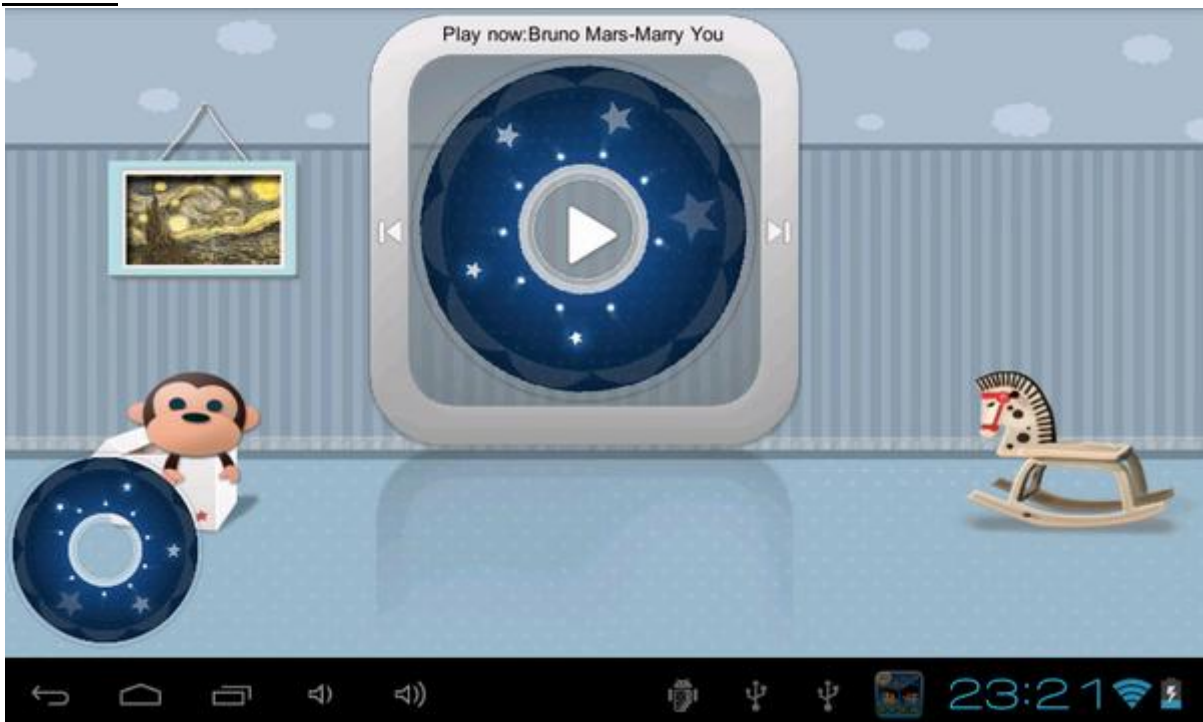
How to upload a picture in your software kids ? Refer to page 18 5) How to transfer documents via USB ?

To delete a picture, press on one to be on full screen. Then press another time, and a trash will appear.

This user guide is a standard model. It should be adapted according to your hardware and Android version.



c-music



To open the music library, press “play button” to play and pause, the background change automatically.

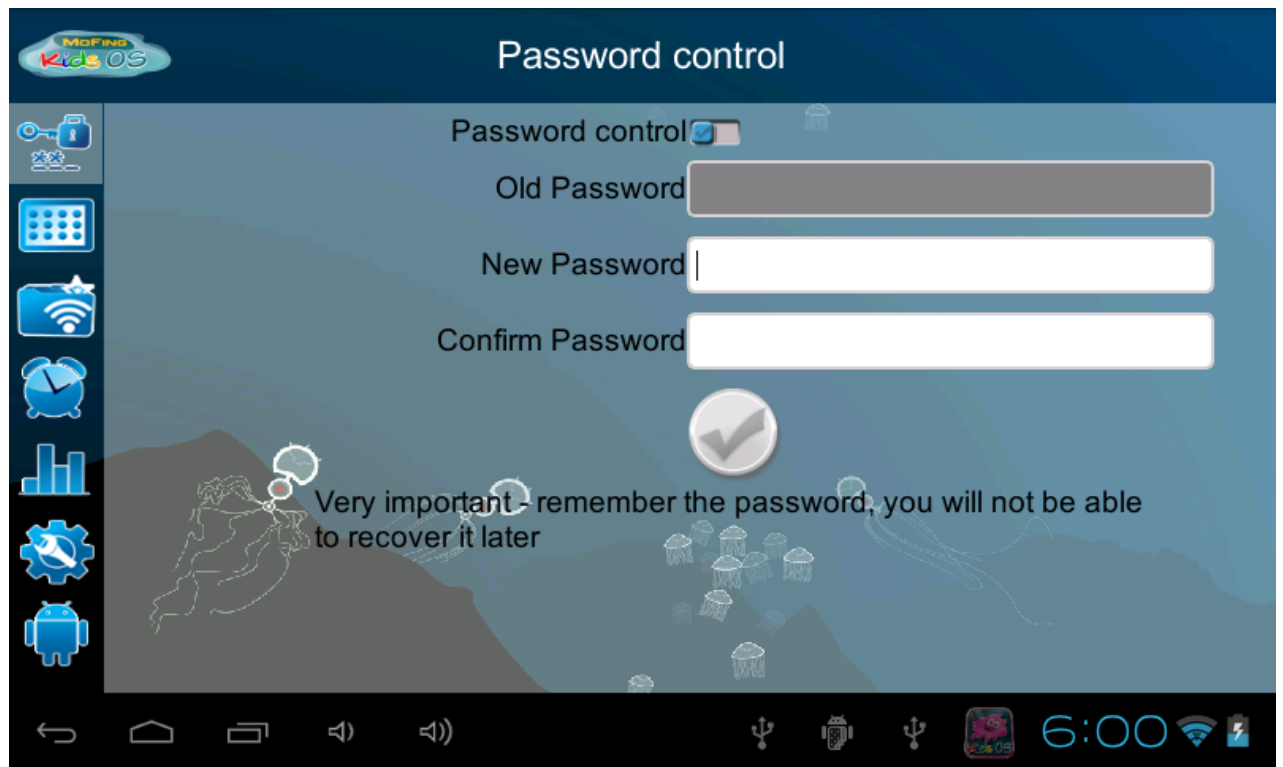
How to upload / delete music in the software kids? Refer to page 18 5) How to transfer documents via USB ?

d- Parental control

After you entered you password, you can access to the parental control home page. Just select the option you want to check or modify.

1-Password

This user guide is a standard model. It should be adapted according to your hardware and Android version.



In this section, you can choose to get a password to reach the parental control category. In set password, ***select "Password control" first***, then write your new password and confirm it. If you want to change your password, just write your old password before your new one.

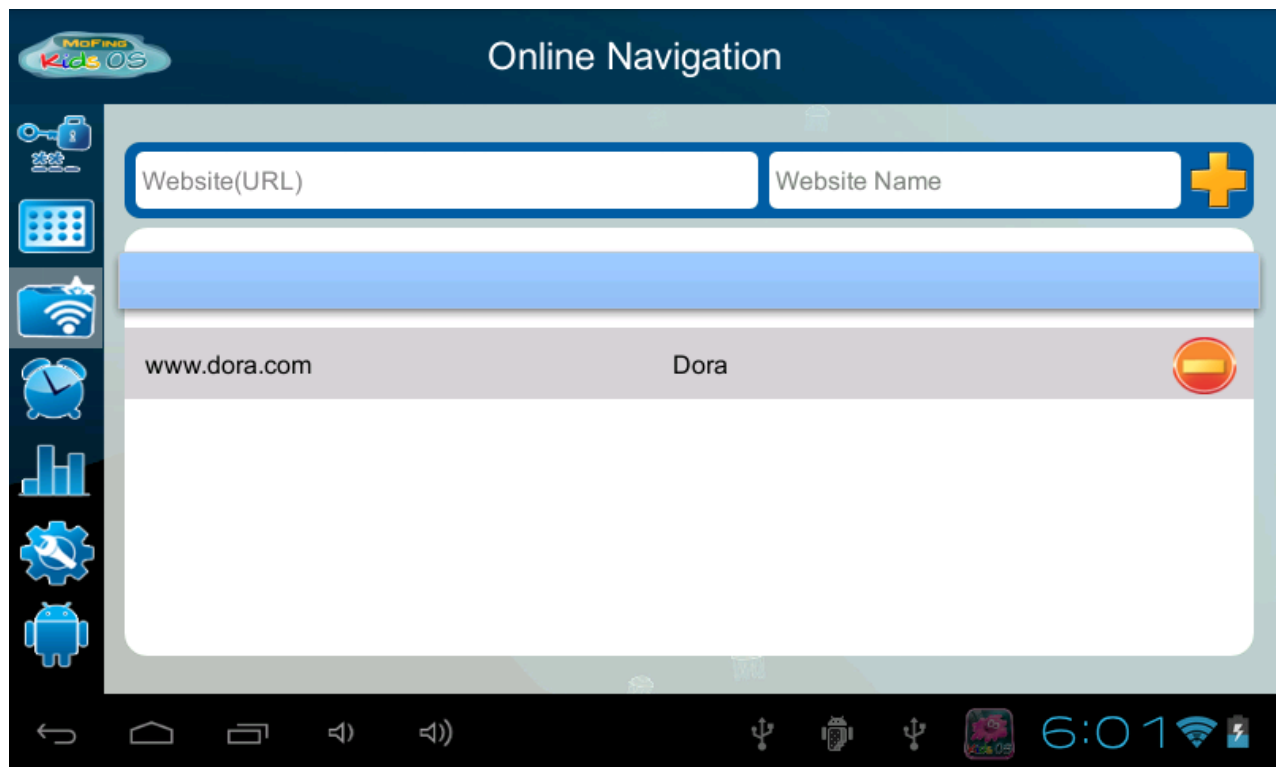
2- APP manager



in the section, select category(Game, Education,Book)which you want, and then select app and press save, finish above, that application will appear you selected category.

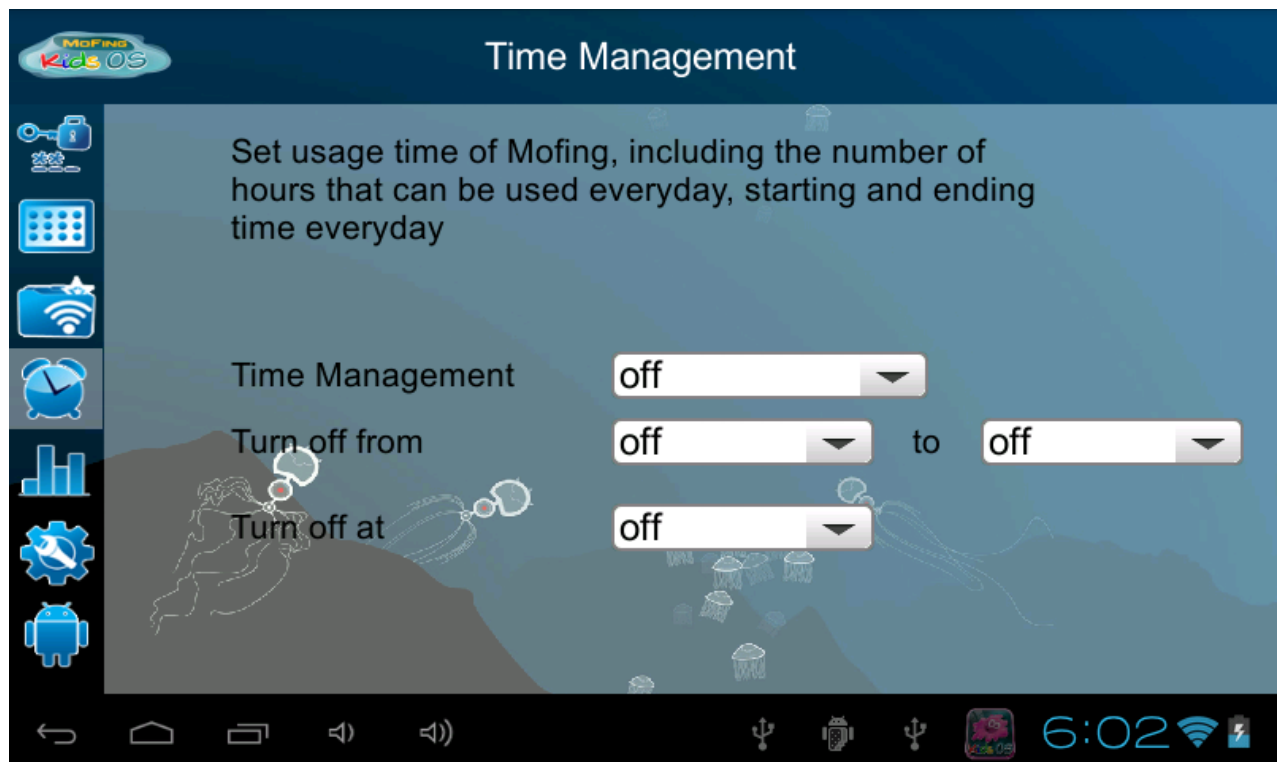
This user guide is a standard model. It should be adapted according to your hardware and Android version.

3- Online Navigation



Parent can add suitable website link for kids in “ Parent setting – online content”, and then kids can browse these filtered website in “Navigate”.

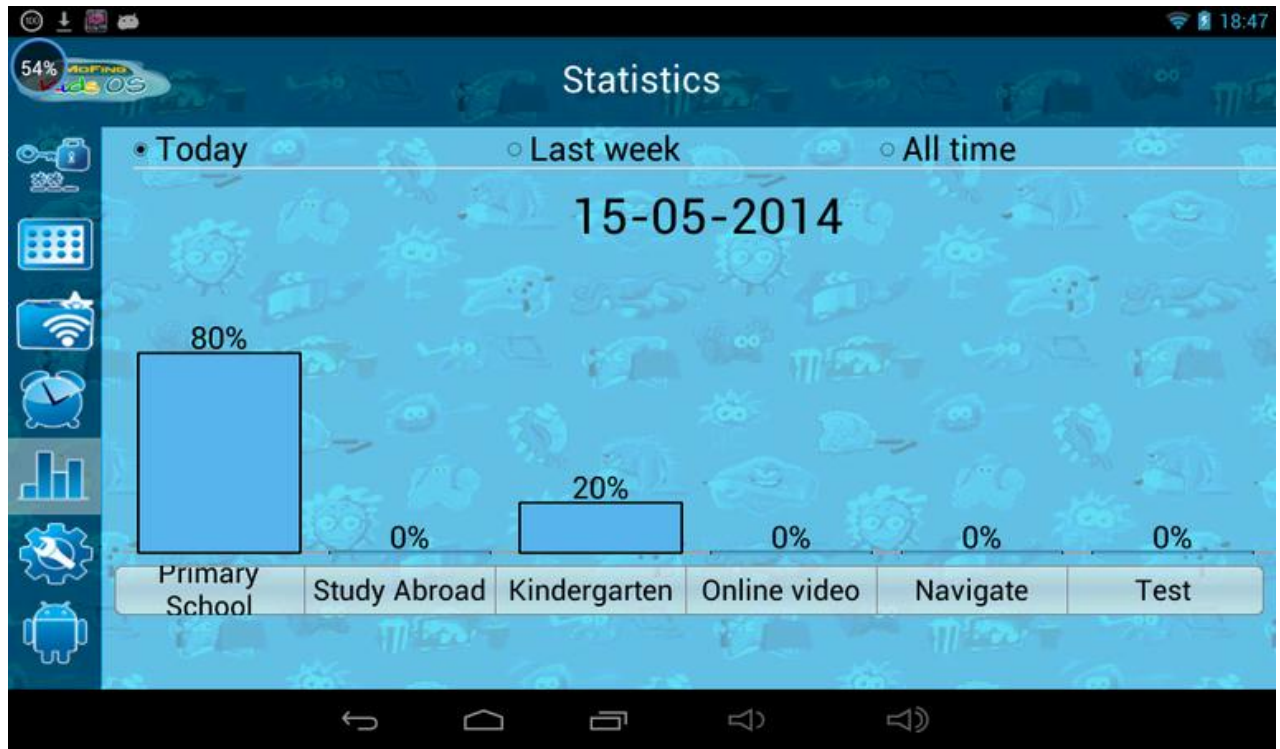
4- Time management



This user guide is a standard model. It should be adapted according to your hardware and Android version.

With this option you can just chose how long you want Mofing Kids to be use per day. First select the maximum of hours you want the interface to be active. You can then chose an interval of hours during which the kid is able to use Mofing. Finally, press on the last arrow to select the later the program can be used.

5-Statistics



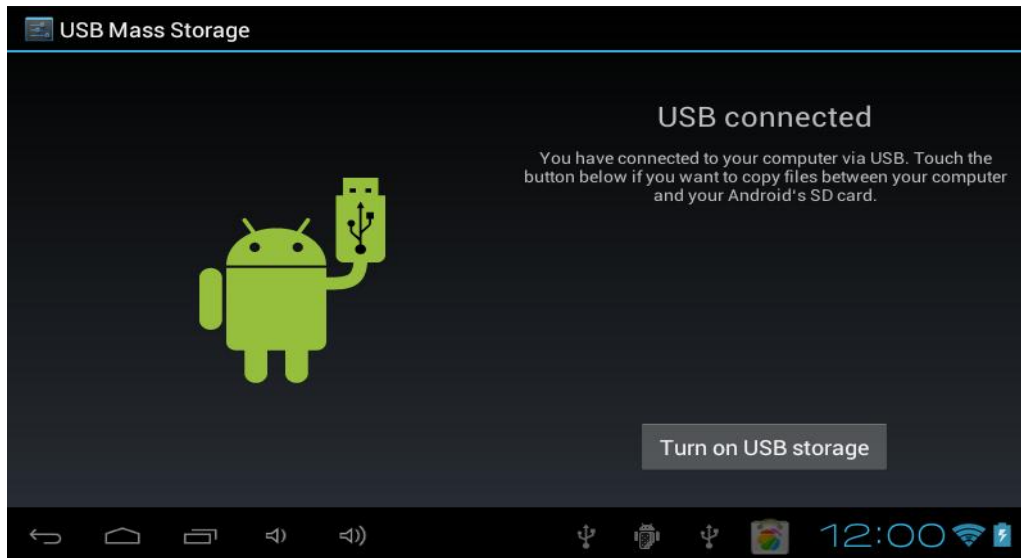
Thanks to this function, you will be able to check with details what the kid does with the device. Just select if you want a report from the last week, today or all time.

5- How to transfer documents via USB ?

In order to do that, first connect your tablet to your computer with the cable provided in the packaging.

Then access the Settings, press on the “USB Connection” icon and press on “connect USB storage”.

This user guide is a standard model. It should be adapted according to your hardware and Android version.



Now your tablet should appear on your computer's list of connected devices. Every different kind of documents can be placed in specific folders.

a) upload music, videos and photos

- Copy music in the folder "music_kids",
- Copy videos in the folder "video_kids"
- Copy photos in the folder "photo_kids".

b) Delete documents.

If you want to delete some documents, proceed the same way and cut the documents you don't want to see any more in the various folders.

For the formats that can be accepted for every kind of documents, it depends on your Android device so please check it in the manual of your hardware.

6- Moreinformation

Enjoy Mofing Kids experience !

This user guide is a standard model. It should be adapted according to your hardware and Android version.